

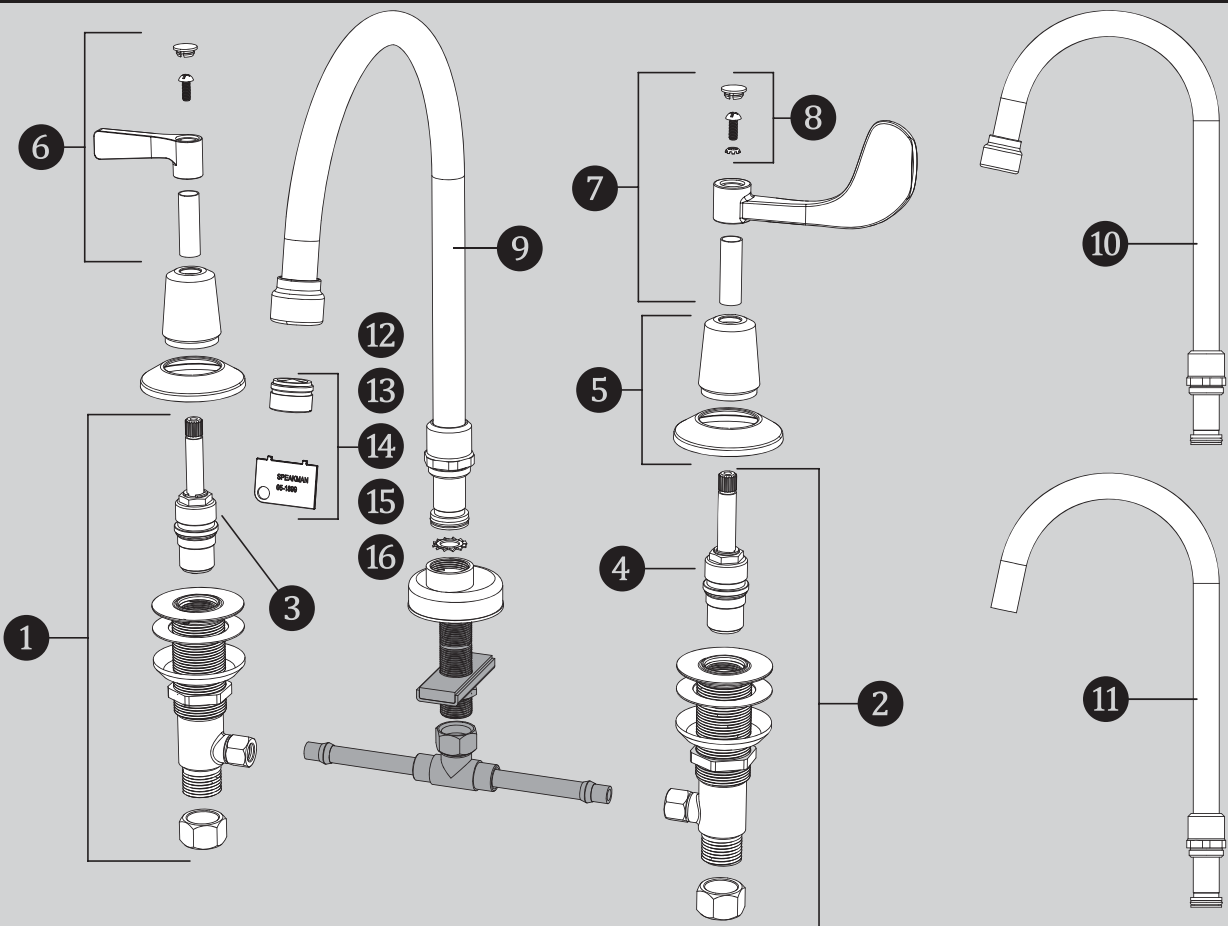


BEST PLUMBING SPECIALTIES

Ph: 800-448-6710 | www.bestplumbingspecialties.com

SC-300X-LD REPAIR PARTS

SPEAKMAN®



ITEM NO.	PART NO.	DESCRIPTION
1	99100553	END BODY ASSEMBLY (RED) W/ MOUNTING HARDWARE & HOSE ADAPTER
2	99100554	END BODY ASSEMBLY (BLUE) W/ MOUNTING HARDWARE & HOSE ADAPTER
3	36698	PERFECT VALVE GROUP (RED) WITH TRIM SLEEVE & SCREW
4	366980	PERFECT VALVE GROUP (BLUE) WITH TRIM SLEEVE & SCREW
5	99103385	TRIM COLLAR & FLANGE GROUP
6	99103166	METAL LEVER HANDLE GROUP
7	99100578	4" WRIST BLADE HANDLE GROUP
8	99042642	RED, BLUE, & CHROME INDEXES WITH SCREWS & LOCK WASHERS
9	99121798	8" GOOSENECK ASSEMBLY (INCLUDING O-RING)
10	99730191	5" GOOSENECK ASSEMBLY (INCLUDING O-RING)
11	99713137	5" FC GOOSENECK ASSEMBLY (INCLUDING O-RING)
12	99473250	1.5 GPM (5.7 L/min) AERATOR ASSEMBLY WITH WRENCH
13	99060686	BOCA 0.5 GPM FLOW OUTLET ASSEMBLY WITH WRENCH (-E)
14	99880042	1.5 GPM (5.7 L/min) LAMINAR FLOW OUTLET ASSEMBLY WITH WRENCH
15	99884015	1.2 GPM (4.5 L/min) AERATOR ASSEMBLY WITH WRENCH
16	99880045	1.2 GPM (4.5 L/min) LAMINAR FLOW OUTLET ASSEMBLY WITH WRENCH

SC-3004-LD ROUGH-IN DIAGRAM

SPEAKMAN®

